



**PROGRAMMABLE
POLYPHONIC
SYNTHESIZER**

MODEL AX80

SECTION 1 SERVICE MANUAL

SECTION 2 PARTS LIST

SECTION 3 SCHEMATIC DIAGRAM

SECTION 4 SERVICE BULLETIN

for C-Type IC

[illegible]

* VOICE IC ECM3372 HAS TWO TYPES AS B-TYPE AND C-TYPE
DATA NO. 26, 28 AND 32 ARE DIFFERENT FROM C-TYPE IC.

I-ROM SOUND DATA

	OSC-1						OSC-2						VCF						UFO				VCF				VGA_VCA_VCF										EG				VCF				VCF																																																							
	1	2	3	4	5	6	7	8	9	10	11	12	13	14	15	16	17	18	19	20	21	22	23	24	25	26	27	28	29	30	31	32	33	34	35	36	37	38	39	40	41	42	43	44	45	46	47	48	49	50	51	52	53	54	55	56	57	58	59	60	61	62	63	64	65	66	67	68	69	70	71	72	73	74	75	76	77	78	79	80	81	82	83	84	85	86	87	88	89	90	91	92	93	94	95	96	97	98	99	100
P1	1	2	1	99	4	1	99	4/10	51	1	0	49	2	32	83	8	57	16	58	11	1	0	0	4	0	17	0	3	0	0	0	4	1	0	49	0	9	30	14	23	11	99	47	1	99	85																																																						
P2	8	2	34	10	0	58	20	50	1	0	50	1	99	53	10	53	58	87	15	7	12	0	4	0	12	0	4	0	20	0	4	1	3	38	0	10	83	0	4	0	16	0	1	99	99																																																							
P3	16	2	99	0	0	99	164	71	1	1	78	1	32	90	23	75	23	35	0	0	52	2	4	0	90	0	3	0	0	4	1	0	40	0	0	0	0	70	0	0	1	91	99																																																									
P4	8	3	99	0	1	82	87	29	3	1	42	1	99	74	32	60	99	1	0	0	40	0	4	0	83	0	2	0	81	0	2	1	0	25	0	5	53	0	97	0	0	87	1	54																																																								
P5	4	0	0	0	1	99	240	47	2	0	72	1	99	70	8	0	57	0	99	16	0	0	4	0	41	0	2	0	46	0	1	1	1	31	0	23	71	0	0	0	0	46	1	57	77																																																							
P6	8	3	24	1	1	99	87	57	1	2	50	2	57	65	6	7	3	38	6	7	52	0	4	0	90	0	3	0	24	0	4	1	0	45	0	15	19	0	24	0	9	1	86	32																																																								
P7	8	3	99	1	99	477	45	1	1	50	1	35	31	18	77	23	0	0	0	40	9	4	24	9	4	11	0	10	4	1	30	66	72	10	99	49	31	65	97	11	91	1	0	24																																																								
P8	8	1	0	50	0	99	870	80	1	0	50	2	54	59	12	77	13	34	11	0	99	0	4	24	0	0	4	0	58	0	4	1	37	66	72	10	99	49	47	53	9	91	1	72	42																																																							
P9	16	1	0	50	0	99	1650	80	1	0	50	2	54	58	14	70	23	4	11	0	49	0	4	0	0	4	0	58	0	4	1	42	66	72	10	99	49	47	53	9	91	1	72	75																																																								
P10	16	1	0	0	0	99	1650	50	0	0	50	1	0	19	10	85	40	37	0	0	31	9	4	3	26	64	4	0	20	15	4	1	36	83	66	36	34	27	66	55	18	71	1	55	80																																																							
P11	4	1	0	0	0	99	40	45	1	0	50	1	99	7	4	82	40	50	28	8	42	9	4	3	21	0	3	0	0	0	1	1	38	22	99	8	50	0	4	97	11	91	2	0	40																																																							
P12	8	2	0	0	0	99	1650	50	0	0	50	2	0	26	2	74	42	0	0	13	33	28	4	0	0	4	0	0	0	1	1	47	80	7	31	35	65	79	9	9	1	28	80																																																									
P13	16	3	58	0	0	99	40	50	2	1	56	1	52	40	29	14	28	8	40	9	4	3	21	0	4	0	0	0	1	1	20	63	81	1	50	2	99	94	12	91	1	14	33																																																									
P14	8	2	55	4	0	99	80	42	1	0	50	2	56	67	10	59	9	1	0	52	0	4	0	90	0	3	0	0	0	4	1	51	30	99	24	0	0	96	99	99	1	37	60																																																									
P15	16	2	55	4	0	99	160	87	1	2	50	2	56	68	58	3	50	15	1	0	52	0	4	0	90	0	3	0	0	0	1	38	30	99	24	0	0	99	99	99	0	1	37																																																									
P16	8	3	25	2	0	84	80	99	1	0	50	2	62	77	0	59	99	0	5	48	27	4	0	58	52	2	0	0	0	4	1	35	84	54	11	0	39	48	50	53	0	1	37	28																																																								
P17	16	3	87	3	1	99	160	82	0	2	50	2	99	30	17	72	99	0	0	52	0	4	0	90	0	3	2	4	0	4	1	16	47	0	0	0	31	0	0	0	1	46	31																																																									
P18	16	1	99	3	1	99	80	52	1	0	50	2	99	36	30	59	65	99	0	0	52	0	4	0	90	0	3	2	4	0	4	1	0	74	26	0	0	0	31	0	0	1	0	25																																																								
P19	16	1	0	81	1	87	412	58	2	1	50	2	94	23	28	69	2	55	0	0	0	0	4	0	0	2	0	0	0	2	1	0	35	0	34	0	0	43	22	30	64	1	47	63																																																								
P20	16	2	55	7	0	99	477	90	2	0	50	2	87	57	17	98	36	0	10	1	33	0	4	3	26	4	4	0	57	0	4	1	17	99	9	3	99	0	0	39	14	0	1	0	25																																																							
P21	16	2	55	7	0	99	477	90	2	0	50	2	87	59	0	51	63	0	10	1	33	0	4	3	26	4	4	0	57	0	4	1	17	99	9	3	99	0	0	39	14	0	1	0	25																																																							
P22	8	2	55	4	1	90	2/0	42	1	0	50	2	56	20	11	74	99	1	0	0	52	0	4	0	90	0	3	0	0	0	4	1	35	8	99	9	99	0	96	99	99	0	1	96	42																																																							
P23	8	2	55	4	0	90	2/0	42	1	0	50	2	56	14	11	74	99	1	0	0	52	0	4	0	90	0	3	0	0	0	4	1	35	8	99	10	99	0	96	99	99	0	1	96	77																																																							
P24	8	2	55	7	1	99	1617	90	2	1	50	2	93	44	11	74	99	1	10	0	33	0	4	0	26	4	4	0	41	0	4	1	0	74	69	0	7	0	0	39	14	0	1	0	24																																																							
P25	8	1	18	6	1	99	870	40	1	0	50	1	99	58	0	96	0	99	0	0	0	4	0	0	4	0	0	4	8	0	0	4	1	71	71	24	0	0	23	11	6	9	28	42																																																								
P26	16	1	0	0	0	99	1650	80	1	0	50	2	54	55	0	64	43	0	0	0	99	0	4	0	0	4	0	0	4	0	58	0	4	1	8	72	10	99	22	7	6	9	91	1	28	52																																																						
P27	16	2	55	7	0	64	2/0	50	0	0	0	1	16	38	42	72	44	1	10	4	33	0	2	3	26	4	4	0	99	15	2	1	0	74	69	0	7	0	63	39	16	0	1	0	70																																																							
P28	16	1	99	0	0	99	1650	80	1	0	50	2	54	51	27	80	61	50	0	0	52	0	4	0	4	0	36	4	0	0	1	0	30	0	0	0	0	0	21	0	0	1	37	79																																																								
P29	8	2	55	4	1	99	1617	87	1	0	50	2	54	51	99	99	28	1	0	0	52	0	4	0	90	0	3	0	0	0	4	1	10	85	99	5	0	0	96	99	99	0	1	37	35																																																							
P30	8	2	52	25	0	99	80	75	2	0	50	2	50	50	30	51	66	40	10	0	33	0	3	3	1	3	26	0	4	3	50	0	4	64	99	99	50	99	37	82	82	57	0	1	0	28																																																						
P31	10	3	81	0	0	81	2/0	1	0	0	0	0	30	33	50	81	0	99	99	0	99	99	0	1	99	99	8	4	29	75	0	4	1	0	66	99	85	81	0	0	81	05	91	1	81	99																																																						
P32	10	3	0	0	1	5	16/0	80	3	2	49	2	99	48	27	89	0	0	54	0	99	0	99	0	4	0	0	4	2	7	0	4	1	0	66	99	99	0	99	99	99	99	2	1	0	0																																																						

SECTION 2

PARTS LIST

TABLE OF CONTENTS

RECOMMENDED SPARE PARTS	21
1. PC BOARD BLOCK	22
2. VOICE PC BOARD	22
3. CPU PC BOARD	23
4. FLD (2) PC BOARD	23
5. FLD (1) PC BOARD	23
6. OPERATION (1) PC BOARD	23
7. OPERATION (2) PC BOARD	23
8. OPERATION (3) PC BOARD	23
9. JACK PC BOARD	23
10. POWER SUPPLY PC BOARD	24
11. FILTER PC BOARD	24
12. MUTING PC BOARD	24
13. PANEL BEND BLOCK	25
14. ASSEMBLY BLOCK	27
15. FINAL ASSEMBLY BLOCK	27
INDEX	28

This Manual is FOR INTERNAL USE ONLY and must not be made available to unauthorized personal. No part of this manual may be reproduced in any form without permission from AKAI-ELECTRIC CO., LTD., Tokyo, Japan.

ATTENTION

1. When placing an order for parts, be sure to list the parts no., model no., and description of each part. If any of this information is omitted, there are instances in which parts cannot be shipped or the wrong parts will be delivered.
2. Please be careful not to make a mistake in the parts no. If the parts no. is in error, a part different from the one ordered may be delivered.
3. Because part numbers and part definitions and supply in the Preliminary Parts List may have been the subject of changes, please use this parts list for all future reference.

HOW TO USE THIS PARTS LIST

1. This Parts List shows those parts which are considered necessary for repairs. Other parts, such as resistors and capacitors, are shown in the "Common List for Service Parts" from which these parts should be selected and parts.
2. The Recommended Spare Parts List shows those parts in the Parts List which are considered particularly important for service.
3. Parts not shown in the Parts List and "Common List for Service Parts" will not in principle be supplied.
4. How to read the parts list

a) Mechanism Block

b) P.C Board Block

2. HEAD BASE BLOCK

REF. NO.	PART NO.	DESCRIPTION
2-1x	BH-T2023A320A	HEAD BASE BLOCK GX-F66R
2-2	HP-H2206A010A	HEAD R/P PR4-8FU C
2-3	ZS-477876	PAN20×03STL CMT
2-4	ZS-536488	BID20×08STL CMT
2-5	ZG-402895	CS ANGLE ADJUST SPRING

SP (Service Parts) Classification

A small "x" indicates the inability to show that particular part in the Photo or Illustration.

This number corresponds with the individual parts index number in that figure

This number corresponds with the Figure Number

6. SYS. CON. P C BOARD BLOCK

REF. NO.	PART NO.	DESCRIPTION
6-1	BA-T2034A070A	PC SYS CON BLK GX-F44R
6-1C1	EI-324536	IC HD14049BP
6-1C2	EI-336801	IC MB8841-564M
6-1C3	EI-331661	IC SN7405N
6-1C4	EI-336725	IC M54527P
6-TR1to4	ET-200985	TR 2SC2603 F,G
6-TR5to28	ET-554657	TR 2SA733A P,Q
6-D1	ED-318292	D SILICON H 1S2473T-77 T26
6-D2to4	ED-308952	D GERMA V 1K34A-LR F07
6-D5to10	ED-318292	D SILICON H 1S2473T-77 T26
6-X1	EI-318384	OSC X'TAL NC-18C

3.579545MHZ

SP (Service Parts) Classification

These reference symbols correspond with component symbols in the Schematic Diagrams.

5. The kind of part and its installation position can both be determined by the Part Number. To determine where a part number is listed, utilize the Parts Index at the end of the Parts List. It is necessary first of all to find the Part Number. This can be accomplished by using the Reference Number listed at the right of the part number in the Parts Index.

WARNING

⚠ INDICATES SAFETY CRITICAL COMPONENTS. FOR CONTINUED SAFETY, REPLACE SAFETY CRITICAL COMPONENTS ONLY WITH MANUFACTURE'S RECOMMENDED PARTS

AVERTISSEMENT

⚠ IL INDIQUE LES COMPOSANTS CRITIQUES DE SÉCURITÉ. POUR MAINTENIR LE DEGRÉ DE SÉCURITÉ DE L'APPAREIL, NE REMPLACER QUE DES PIÈCES RECOMMANDÉES PAR LE FABRICANT

RECOMMENDED SPARE PARTS LIST

Because, if the parts listed below are on hand, almost any repair can be accomplished, we suggest that you stock these Recommended Spare Parts Items.

REF. NO.	PART NO.	DESCRIPTION
1	N BT-354247	△ TRANS POWER AX-80 T-10 [J]
2	N BT-354246	△ TRANS POWER AX-80 T-30 [C, A]
3	N BT-354245	△ TRANS POWER AX-80 T-70 [U, E, B, S]
4	N ED-357036	△ D SILICON DBA20B 100/2.0A
5	N ED-357038	△ D SILICON DBB10B 100/1.0A
6	ED-337265	△ D ZENER H HZ6 C2
7	N ED-354114	D LED BR-5507S RED
8	N ED-357037	D SILICON DBA30B 100/3.0A
9	ED-301911	D SILICON H DS448
10	ED-344280	D SILICON H GMA-01-FY2 F05
11	ED-315614	D SILICIN 10D1FA-1 F15 100/1.0A
12	ED-310387	D ZENER H HZ12 B2
13	ED-329058	D ZENER H HZ5 C1
14	ED-306010	D ZENER H HZ6 A2
15	EF-602550	△ FUSE SEMKO T 1.25A 250V [U, E, B, S]
16	EF-691007	△ FUSE SEMKO T 3.15A 250V [U, E, B, S]
17	EF-258344	△ FUSE SEMKO T 800MA 250V [U, E, B, S]
18	EF-306949	△ FUSE TSC A 250V 1.25A [J]
19	EF-311839	△ FUSE TSC A 250V 1.60A [J]
20	EF-326639	△ FUSE TSC A 250V 3.15A [J]
21	EF-309392	△ FUSE TSC 125V 1.25A [C, A]
22	EF-308847	△ FUSE TSC 125V 1.60A [C, A]
23	EF-306956	△ FUSE TSC 125V 2.50A [C, A]
24	EF-323080	△ FUSE TSC 125V 3.15A [C, A]
25	N EI-354283	ICBA6110
26	N EI-354184	IC CEM3372 3160B (B TYPE)
27	N EI-359630	IC CEM3372 3160C (C TYPE)
28	N EI-354098	IC HD74LS154P
29	N EI-355578	IC MM74HC139N
30	N EI-354162	IC MM74HC32N
31	EI-307644	IC NJM4556D
32	EI-213390	IC NJM4558D
33	EI-336995	IC NJM78L05A
34	N EI-354175	IC NJM78M05
35	N EI-355665	IC NJM7815A
36	N EI-356299	IC NJM79M05A
37	N EI-355666	IC NJM7915A
38	N EI-354158	IC SN74LS00N
39	EI-310043	IC SN74LS03N
40	N EI-354152	IC SN74LS138N
41	N EI-354159	IC SN74LS14N
42	N EI-355560	IC SN74LS27N
43	N EI-355575	IC SN74LS293N
44	N EI-354153	IC SN74LS373N
45	N EI-355771	IC SN74LS38N
46	N EI-353315	IC SN74LS42N
47	EI-304657	IC TC4011BP
48	EI-306727	IC TC4013BP/MC14013B
49	EI-330391	IC TC4050BP
50	EI-302233	IC TC4051BP
51	EI-324255	IC TL082CP
52	N EI-354099	IC uPA80C
53	N EI-354197	IC uPC311C

REF. NO.	PART NO.	DESCRIPTION
54	N EI-354145	IC uPD2764D I (I TYPE)
55	N EI-359631	IC uPD2764 K (K TYPE)
56	N EI-354147	IC uPD446C-1
57	N EI-357060	IC uPD7811G-144
58	N EI-354146	IC uPD8253C-2
59	N EI-354149	IC uPD8255AC-2
60	N EI-354232	IC uPD8279C-2
61	N EI-354123	OSC CE CSA120MT 12.000000MHz
62	N EI-354168	OSC X TAL HC-16 6.554800MHz
63	N EI-354235	DIN J TCS0815-0101 5P
64	N EJ-357159	PHONE J 2P HLJ0520-110 W/NUT 6.3
65	N ES-353031	PHONE J 3P HLJ0520-010
66	N EM-354097	IND FL BG-263ZK CHARACTER
67	N EM-354113	IND LE TLR325
68	N EM-354112	IND LE TLR353
69	N EO-354224	COIL LF PLA2021A
70	EQ-348929	REALAY SIG G5A-232P 2TR 12V
71	ER-320528	△ R FUSE ERD2FC 1/4W 22R0G
72	N ES-355573	△ SW SEESAW SDDAB1097A T = 8.5 [C, A]
73	N ES-354236	△ SW SEESAW SDDJA1153A [J, U, E, B, S]
74	ES-349070	△ SW SELECTOR YKS11-0002 02-4 [U, E, B, S]
75	N ES-357045	SW SLIDE SSSB02685A 2-02-02N
76	N ES-354115	SW TACT SKHCAC021A
77	ET-347026	△ TR 2SB507HP E, F
78	N ET-354167	PHOTO SENSOR PC900
79	N ET-357061	PHOTO SENSOR TLP531BL
80	ET-491051	TR FET 2SK30A GR
81	ET-322778	TR 2SA608K-NP E, F, G
82	ET-308141	TR 2SC2603 G
83	ET-403413	TR 2SC536NP H
84	EV-307695	R S-FIX H H0651A 3P 0.05W 104
85	EV-336770	R S-FIX H H0651A 3P 0.05W 473
86	N EV-354255	VR ROTARY 16L10XOV B103
87	N EV-354254	VR ROTARY 16L10XOW 103 CUS-TOM-2
88	N EV-358043	VR ROTARY 16L10XOX B103 L = 20
89	N EV-354253	VR ROTARY 16P20×3T A503
90	N EV-354256	VR ROTARY 24L10×1G B013
91	N EZ-354169	BATTERY LITHIUM 3V CR2430-T

“NOTE” N: New Part
SYMBOL FOR DESTINATION

- [A] : AAL (U.S.A)
- [B] : UK (England)
- [C] : CSA (Canada)
- [E] : CEE (Europe)
- [J] : JPN (Japan)
- [S] : SAA (Australia)
- [U] : U/T (Universal Area)

1. PC BOARD BLOCK

REF. NO.	PART NO.	DESCRIPTION
1-1	BA-L1003A040A	PC VOICE BLK AX80
1-2	BA-L1003A030A	PC CPU BLK AX80[U]
1-3A	BA-L1003A120A	PC PANEL (1) BLK AX80[U, J, E, B, S]
1-3B	BA-L1003A120B	PC PANEL (1) BLK AX80(C, A)
1-4	BA-L1003A130A	PC PANEL (2) BLK AX80
1-5A	BA-L1003A050A	PC POWER BLK AX80[J]
1-5B	BA-L1003A050B	PC POWER BLK AX80[CA]
1-5C	BA-L1003A050C	PC POWER BLK AX80[U, E, B, S]
1-6A	BA-L3001A050A	PC FILTER BLK AX80[J]
1-6B	BA-L3001A050B	PC FILTER BLK AX80[U, E, B, S]
1-6C	BA-L3001A050C	PC FILTER BLK AX80[C, A]
1-7	BA-L1003A140A	PC MUTING BLK AX80

NOTES:

(1) PC PANEL (1) BLK consists of following PC BOARDS.

- FLD (1) PC BOARD
- OPERATION (2) PC BOARD
- JACK PC BOARD

(2) PC PANEL (2) BLK consists of following PC BOARDS.

- FLD (2) PC BOARD
- OPERATION (1) PC BOARD
- OPERATION (3) PC BOARD

2. VOICE PC BOARD

REF. NO.	PART NO.	DESCRIPTION
2-IC1	EI-354152	IC SN74LS138N
2-IC2 to 6	EI-302233	IC TC4051BP
2-IC7	EI-213390	IC NJM4558D
2-IC8 to 27	EI-324255	IC TL082CP
2-IC28	EI-354283	IC BA6110
2-IC101, 102	EI-213390	IC NJM4558D
2-IC103, 104	EI-304657	IC TC4011BP
2-IC105	EI-306727	IC TC 4013BP/MC14013B
2-IC106A	EI-354184	IC CEM3372 3160B (B TYPE)
2-IC106B	EI-359630	IC CEM3372 3160C (C TYPE)
2-IC107, 201, 202	EI-213390	IC NJM4558D
2-IC206A	EI-354184	IC CEM3372 3160B (B TYPE)
2-IC206B	EI-359630	IC CEM3372 3160C (C TYPE)
2-IC301, 302	EI-213390	IC NJM4558D
2-IC303, 304	EI-304657	IC TC4011BP
2-IC305	EI-306727	IC TC4013BP/MC14013B
2-IC306A	EI-354184	IC CEM3372 3160B (B TYPE)
2-IC306B	EI-359630	IC CEM3372 3160C (C TYPE)
2-IC307, 401, 402	EI-213390	IC NJM4558D
2-IC406A	EI-354184	IC CEM3372 3160B (B TYPE)
2-IC406B	EI-359630	IC CEM3372 3160C (C TYPE)
2-IC501, 502	EI-213390	IC NJM4558D
2-IC503, 504	EI-304657	IC TC4011BP
2-IC505	EI-306727	IC TC4013BP/MC14013B
2-IC506A	EI-354184	IC CEM3372 3160B (B TYPE)
2-IC506B	EI-359630	IC CEM3372 3160C (C TYPE)
2-IC507, 601, 602	EI-213390	IC NJM4558D
2-IC606A	EI-354184	IC CEM3372 3160B (B TYPE)
2-IC606B	EI-359630	IC CEM3372 3160C (C TYPE)
2-IC701, 702	EI-213390	IC NJM4558D
2-IC703, 704	EI-304657	IC TC4011BP
2-IC705	EI-306727	IC TC4013BP/MC14013B
2-IC706A	EI-354184	IC CEM3372 3160B (B TYPE)
2-IC706B	EI-359630	IC CEM3372 3160C (C TYPE)
2-IC707, 801, 802	EI-213390	IC NJM4558D
2-IC806A	EI-354184	IC CEM3372 3160B (B TYPE)
2-IC806B	EI-359630	IC CEM3372 3160C (C TYPE)
2-TR1, 101, 102	ET-322778	TR 2SA608K-NP E, F, G
2-TR103, 104	ET-491051	TR FET 2SK30A GR

REF. NO.	PART NO.	DESCRIPTION
2-TR201, 202	ET-322778	TR 2SA608K-NP E, F, G
2-TR203	ET-491051	TR FET 2SK30A GR
2-TR204	ET-491051	TR FET 2SK30A GR
2-TR301, 302	ET-322778	TR 2SA608K-NP E, F, G
2-TR303, 304	ET-491051	TR FET 2SK30A GR
2-TR401, 402	ET-322778	TR 2SA608K-NP E, F, G
2-TR403, 404	ET-491051	TR FET 2SK30A GR
2-TR501, 502	ET-322778	TR 2SA608K-NP E, F, G
2-TR503, 504	ET-491051	TR FET 2SK30A GR
2-TR601, 602	ET-322778	TR 2SA608K-NP E, F, G
2-TR603, 604	ET-491051	TR FET 2SK30A GR
2-TR701, 702	ET-322778	TR 2SA608K-NP E, F, G
2-TR703, 704	ET-491051	TR FET 2SK30A GR
2-TR801, 802	ET-322778	TR 2SA608K-NP E, F, G
2-TR803, 804	ET-491051	TR FET 2SK30A GR
2-D1	ED-329058	D ZENER H HZ5 C1
2-D2, 101 to 107	ED-301911	D SILICON H DS448
2-D108, 109	ED-344280	D SILICON H GMA-01-FY2 F05
2-D201 to 207	ED-301911	D SILICON H DS448
2-D208, 209	ED-344280	D SILICON H GMA-01-FY2 F05
2-D301 to 307	ED-301911	D SILICON H DS448
2-D308, 309	ED-344280	D SILICON H GMA-01-FY2 F05
2-D401 to 407	ED-301911	D SILICON H DS448
2-D408, 409	ED-344280	D SILICON H GMA-01-FY2 F05
2-D501 to 507	ED-301911	D SILICON H DS448
2-D508, 509	ED-344280	D SILICON H GMA-01-FY2 F05
2-D601 to 607	ED-301911	D SILICON H DS448
2-D608, 609	ED-344280	D SILICON H GMA-01-FY2 F05
2-D701 to 707	ED-301911	D SILICON H DS448
2-D708, 709	ED-344280	D SILICON H GMA-01-FY2 F05
2-D801 to 807	ED-301911	D SILICON H DS448
2-D808, 809	ED-344280	D SILICON H GMA-01-FY2 F05
2-VR1	EV-336770	R S-FIX H H0651A 3P 0.05W 473
2-VR101	EV-307695	R S-FIX H H0651A 3P 0.05W 104
2-VR102	EV-336770	R S-FIX H H0651A 3P 0.05W 473
2-VR201	EV-307695	R S-FIX H H0651A 3P 0.05W 104
2-VR202	EV-336770	R S-FIX H H0651A 3P 0.05W 473
2-VR301	EV-307695	R S-FIX H H0651A 3P 0.05W 104
2-VR302	EV-336770	R S-FIX H H0651A 3P 0.05W 473
2-VR401	EV-307695	R S-FIX H H0651A 3P 0.05W 104
2-VR402	EV-336770	R S-FIX H H0651A 3P 0.05W 473
2-VR501	EV-307695	R S-FIX H H0651A 3P 0.05W 104
2-VR502	EV-336770	R S-FIX H H0651A 3P 0.05W 473
2-VR601	EV-307695	R S-FIX H H0651A 3P 0.05W 104
2-VR602	EV-336770	R S-FIX H H0651A 3P 0.05W 473
2-VR701	EV-307695	R S-FIX H H0651A 3P 0.05W 104
2-VR702	EV-336770	R S-FIX H H0651A 3P 0.05W 473
2-VR801	EV-307695	R S-FIX H H0651A 3P 0.05W 104
2-VR802	EV-336770	R S-FIX H H0651A 3P 0.05W 473
2-FR1	ER-320528	Δ R FUSE ERD2FC 1/4W
2-R106	ER-337338	R MF H F05 1/6W 6202F
2-R127	ER-353582	R MF H F05 1/6W 3001F
2-R128	ER-353064	R MF H F05 1/6W 1502F
2-R141	ER-343989	R MF H F05 1/6W 1001F
2-R206	ER-337338	R MF H F05 1/6W 6202F
2-R227	ER-353582	R MF H F05 1/6W 3001F
2-R228	ER-353064	R MF H F05 1/6W 1502F
2-R241	ER-343989	R MF H F05 1/6W 1001F
2-R306	ER-337338	R MF H F05 1/6W 6202F
2-R327	ER-353582	R MF H F05 1/6W 3001F
2-R328	ER-353064	R MF H F05 1/6W 1502F
2-R341	ER-343989	R MF H F05 1/6W 1001F
2-R406	ER-337338	R MF H F05 1/6W 6202F
2-R427	ER-353582	R MF H F05 1/6W 3001F
2-R428	ER-353064	R MF H F05 1/6W 1502F
2-R441	ER-343989	R MF H F05 1/6W 1001F
2-R506	ER-337338	R MF H F05 1/6W 6202F
2-R527	ER-353582	R MF H F05 1/6W 3001F
2-R528	ER-353064	R MF H F05 1/6W 1502F
2-R541	ER-343989	R MF H F05 1/6W 1001F
2-R606	ER-337338	R MF H F05 1/6W 6202F
2-R627	ER-353582	R MF H F05 1/6W 3001F
2-R628	ER-353064	R MF H F05 1/6W 1502F
2-R641	ER-343989	R MF H F05 1/6W 1001F

22ROG

REF. NO.	PART NO.	DESCRIPTION
2-R706	ER-337338	R MF H F05 1/6W 6202F
2-R727	ER-353582	R MF H F05 1/6W 3001F
2-R728	ER-353064	R MF H F05 1/6W 1502F
2-R741	ER-343989	R MF H F05 1/6W 1001F
2-R806	ER-337338	R MF H F05 1/6W 6202F
2-R827	ER-353582	R MF H F05 1/6W 3001F
2-R828	ER-353064	R MF H F05 1/6W 1502F
2-R841	ER-343989	R MF H F05 1/6W 1001F
2-C105	EC-357035	C PP V CQM-92PP 1001G 100DC
2-C122	EC-328563	C EC V F05 SRA 2R2M 50.0DC
2-C205	EC-357035	C PP V CQM-92PP 1001G 100DC
2-C222	EC-328563	C EC V F05 SRA 2R2M 50.0DC
2-C305	EC-357035	C PP V CQM-92PP 1001G 100DC
2-C322	EC-328563	C EC V F05 SRA 2R2M 50.0DC
2-C405	EC-357035	C PP V CQM-92PP 1001G 100DC
2-C422	EC-328563	C EC V F05 SRA 2R2M 50.0DC
2-C505	EC-357035	C PP V CQM-92PP 1001G 100DC
2-C522	EC-328563	C EC V F05 SRA 2R2M 50.0DC
2-C605	EC-357035	C PP V CQM-92PP 1001G 100DC
2-C622	EC-328563	C EC V F05 SRA 2R2M 50.0DC
2-C705	EC-357035	C PP V CQM-92PP 1001G 100DC
2-C722	EC-328563	C EC V F05 SRA 2R2M 50.0DC
2-C805	EC-357035	C PP V CQM-92PP 1001G 100DC
2-C822	EC-328563	C EC V F05 SRA 2R2M 50.0DC
2-S1 to 4	EJ-358467	SOCKET IC S-I2470

3. CPU PC BOARD

REF. NO.	PART NO.	DESCRIPTION
CPU PC BOARD		
3-IC1, 2	EI-357060	IC μ PD7811G-144
3-IC3	EI-354153	IC SN74LS373N
3-IC5, 6	EI-354147	IC μ PD446C-1
3-IC7	EI-355578	IC MM74HC139N
3-IC8	EI-354152	IC SN74LS138N
3-IC9, 10	EI-354149	IC μ PD8255AC-2
3-IC11	EI-354232	IC μ PD8279C-2
3-IC12	EI-354153	IC SN74LS373N
3-IC13 to 15	EI-330391	IC TC4050BP
3-IC16	EI-355575	IC SN74LS293N
3-IC17	EI-354158	IC SN74LS00N
3-IC18, 19	EI-310043	IC SN74LS03N
3-IC20 to 25	EI-354146	IC UPD8253C-2
3-IC26	EI-354162	IC MM74HC32N
3-IC27	EI-354197	IC μ PC311C
3-IC29	EI-354158	IC SN74LS00N
3-IC30	EI-355560	IC SN74LS27N
3-IC31	EI-354159	IC SN74LS14N
3-IC32	EI-310045	IC SN74LS08N
3-TR1	ET-403413	TR 2SC536NP H
3-D1 to 9	ED-301911	D SILICON H DS448
3-PH1	ET-354167	PHOTO SENSOR PC900
3-PH2	ET-357061	PHOTO SENSOR TLP51BL
3-X1	EI-354123	OSC CE CSA120MT 12.000000 MHz
3-X2	EI-354168	OSC X'TAL HC-16 6.554800 MHz
3-IB1, 2	EH-355561	COMP R EXB-R88 103K
3-IB3 to 6	EH-355580	COMP R EXB-C44 203J
3-IB7, 8	EH-355579	COMP R EXB-Q88 103J
3-R25	ER-355564	R OMF H S15 FS 1W 911J
3-BT1	EZ-354169	BATTERY LITHIUM 3V
3-1	EJ-349202	SOCKET IC 641267-3 P 28P CR2430-T
ASSEMBLY BLOCK		
3-IC4A	EI-354145	IC UPD2764D I (I TYPE)
3-IC4B	EI-359631	IC UPD2764 K (K TYPE)

4. FLD(2) PC BOARD

REF. NO.	PART NO.	DESCRIPTION
4-IC1	EI-354098	IC HD74LS154P
4-IC2, 3	EI-354099	IC μ PA80C
4-D1	ED-306010	D ZENER H HZ6 A2
4-IN1, 2	EM-354097	IND FL BG-263ZK CHARACTER

5. FLD(1) PC BOARD

REF. NO.	PART NO.	DESCRIPTION
5-IC1	EI-354098	IC HD74LS154P
5-IC2 to 6	EI-354099	IC μ PA80C
5-IN1 to 3	EM-354097	IND FL BG-263ZK CHARACTER

6. OPERATION(1) PC BOARD

REF. NO.	PART NO.	DESCRIPTION
6-IC1	EI-353315	IC SN74LS42N
6-IC2, 3	EI-355771	IC SN74LS38N
6-TR1 to 7	ET-322778	TR 2SA608K-NP E, F, G
6-D1	EM-354112	IND LE TL R353 CHARACTER
6-D2, 3	EM-354113	IND LE TL R325
6-D4 to 14	ED-354114	D LED BR-5507S RED
6-SW1 to 14	ES-354115	SW TACT SKHCAC021A

7. OPERATION(2) PC BOARD

REF. NO.	PART NO.	DESCRIPTION
7-SW1 to 19	ES-354115	SW TACT SKHCAC021A

8. OPERATION(3) PC BOARD

REF. NO.	PART NO.	DESCRIPTION
8-SW1 to 13	ES-354115	SW TACT SKHCAC021A

9. JACK PC BOARD

REF. NO.	PART NO.	DESCRIPTION
9-IC1	EI-307644	IC NJM4556D
9-L1, 2	EO-318635	COIL FIX 1 LAL04SK 2R2K
9-R7, 8	ER-306805	R CB H S15 FS RDS 1/2W 101J
9-J1	EJ-357159	PHONE J 2P HLJ0520-110 W/NUT 6.3
9-J2	EJ-353031	PHONE J 3P HLJ0520-010
9-J3 to 6	EJ-357159	PHONE J 2P HLJ0520-110 W/NUT 6.3

10. POWER SUPPLY PC BOARD

REF. NO.	PART NO.	DESCRIPTION
10-IC1	EI-355665	IC NJM7815A
10-IC2	EI-336995	IC NJM78L05A
10-IC3	EI-355666	IC NJM7915A
10-IC4	EI-356299	IC NJM79M05A
10-IC5	EI-354175	IC NJM78M05
10-TR1	ET-347026	△ TR 2SB507HP E, F
10-D1	ED-357036	△ D SILICON DBA20B 100/2.0A
10-D2	ED-357037	△ D SILICON DBA30B 100/3.0A
10-D3	ED-337625	△ D ZENER H HZ6 C2
10-D4	ED-301911	D SILICON H DS448
10-D5	ED-315614	D SILICON 10D1FA-1 F15 100/1.0A
10-D6	ED-357038	△ D SILICON DBB10B 100/1.0A
10-R1	Er-338000	△ R FUSE ERD2FC S10 1/4W 2200G
10-R3	ER-302241	R CB H S10 FS RDS 1/4W 4R7J
10-C4, 11	EC-323847	C EC V CUT SM 102M 35.0DC
10-C18	EC-347967	C EC V S10 KM 682M 16DC
10-1	EZ-200473	SILICON RUBBER SHEET TC-30
10-2	ZW-632226	INSULATOR WASHER (BUSH M)

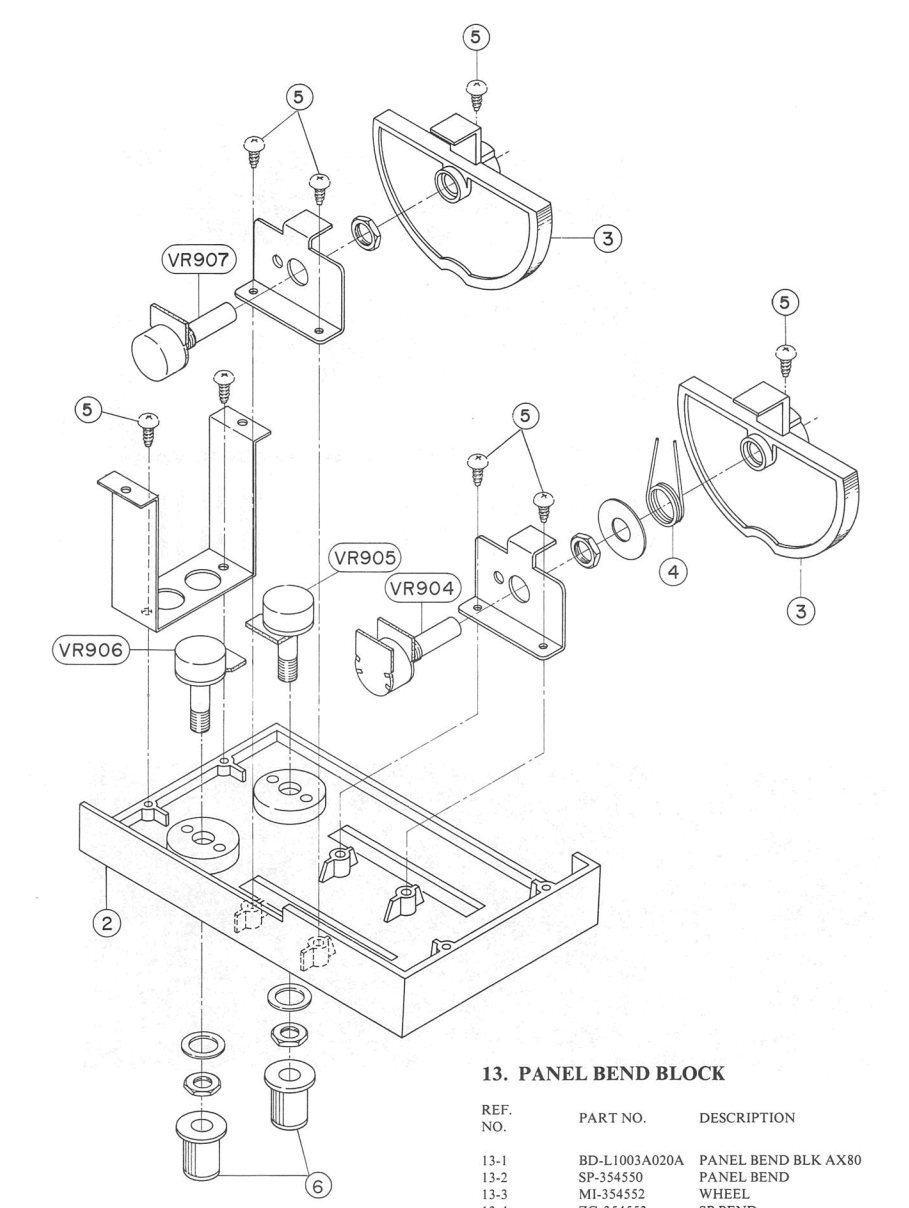
11. FILTER PC BOARD

REF. NO.	PART NO.	DESCRIPTION
11-FL1	EO-354224	COIL LF PLA2021A
11-C1	EC-338411	△ C CE V FZ 103P 400AC

12. MUTING PC BOARD

REF. NO.	PART NO.	DESCRIPTION
12-TR1	ET-308141	TR 2SC2603 G
12-D1, 2	ED-301911	D SILICON H DS448
12-D3	ED-310387	D ZENER H HZ12 B2
12-L1	EQ-348929	RELAY SIG G5A-232P 2TR 12V

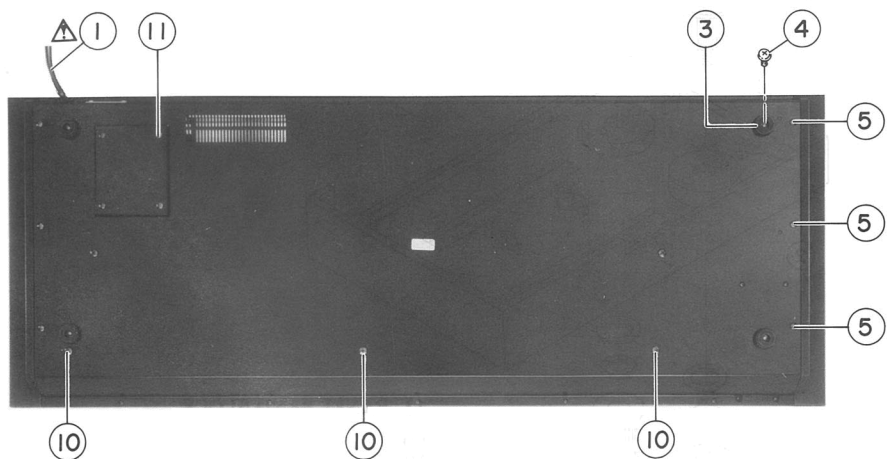
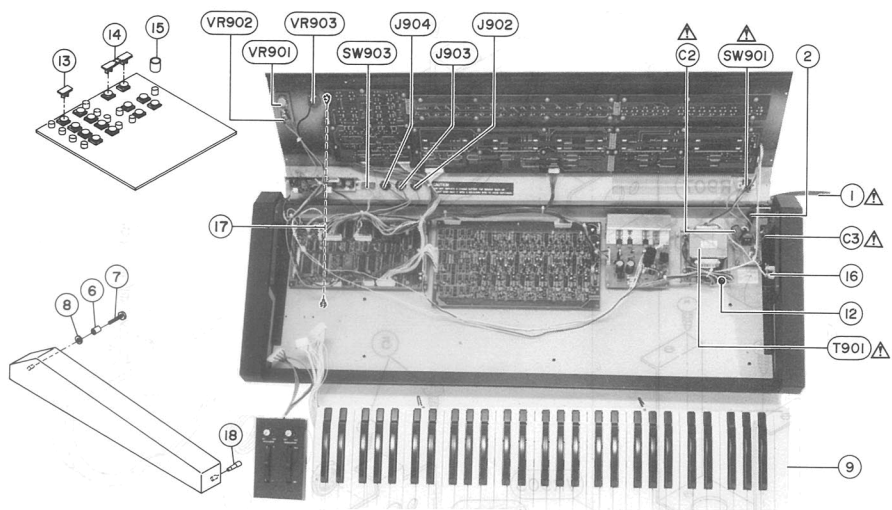
PANEL BEND BLOCK



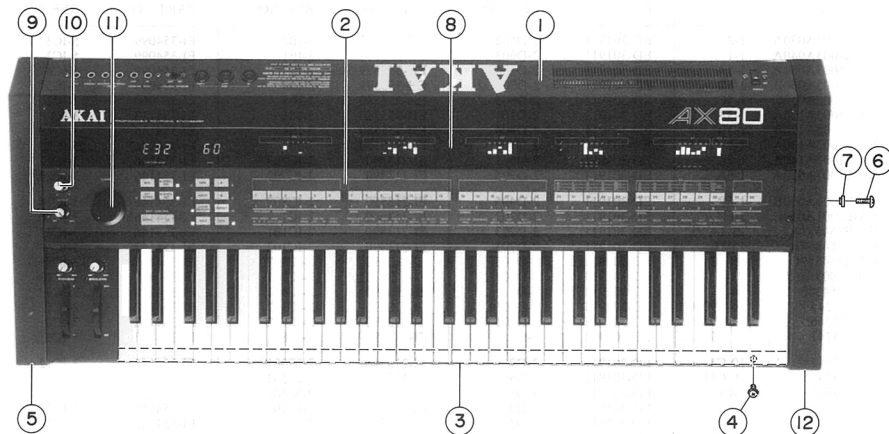
13. PANEL BEND BLOCK

REF. NO.	PART NO.	DESCRIPTION
13-1	BD-L1003A020A	PANEL BEND BLK AX80
13-2	SP-354550	PANEL BEND
13-3	MI-354552	WHEEL
13-4	ZG-354553	SP BEND
13-5	ZS-310984	PT BR30x08STL CMT
13-6	SK-B352952x4	KNOB MONITOR WHITE PART
13-VR904	EV-354253	VR ROTARY 16P20x3T A503
13-VR905, 906	EV-354255	VR ROTARY 16L10xOV B103
13-VR907	EV-354254	VR ROTARY 16L10xOW I03
		CUSTOM-2

ASSEMBLY BLOCK



FINAL ASSEMBLY BLOCK



14. ASSEMBLY BLOCK

REF. NO.	PART NO.	DESCRIPTION
14-1A	EW-306427	△ AC CORD 2 CORES KP-211, VFF J [J]
14-1B	EW-358858	△ AC CORD 2 CORES KP-11 SITAWG18 UC [C, A]
14-1C	EW-315767	△ AC CORD 2 CORES KP-419C/ KS-15 EV [U, E]
14-1D	EW-322400	△ AC CORD 2 CORES KS-15/ GTBS-2F B [B]
14-1E	EW-322401	△ AC CORD 2 CORES KP-560/KS-15 S [S]
14-2A	EZ-631945	STRAIN RELIEF SR-4N-4 [J]
14-2B	EZ-302906	STRAIN RELIEF SR-6N-4 [C, A]
14-3	SA-311742	ROUND FOOT
14-4	ZS-353260	T2BR30×08STL CMT CUP
14-5	ZS-341960	ST BID40×06STL BNI
14-6	TC-690851	SPACER 4×10
14-7	ZS-355569	T1BID30×20STL CMT
14-8	ZW-357644	PW32×100×050STL BNI
14-9	BK-354243	KEYBOARD BLK ESK-30 61KEY
14-10	ZS-354230	BID50×08STL BNI
14-11	ZS-411232	BID40×10STL BNI
14-12	ZW-413267	N FRANGE 40STL CMT
14-13	SE-357978	KNOB BASE (C)
14-14	SK-354544	KNOB BASE (B)
14-15	MH-314988	SPACER 6×10
14-16	EJ-357148	FUSE HOLDER NPF073-01-010
14-17	MZ-358512	WIRE LEAD EARTH RAG×2
14-18	MH-358770	PROP HOLDER
14-T901A	BT-354247	△ TRANS POWER AX-80 T-10 [J]
14-T901B	BT-354246	△ TRANS POWER AX-80 T-30 [C, A]
14-T901C	BT-354245	△ TRANS POWER AX-80 T-70 [U, E, B, S]
14-C2, 3	EC-358450	△ C CE V B 102M 400AC [C, A]
14-VR901, 902	EV-358043	VR ROTARY 16L10XOX B103 L=20
14-VR903	EV-354256	VR ROTARY 24L10×1G B013
14-J901x	EJ-301513	△ SOCKET INLET S-16453 E 2P [U, E, B, S]
14-J902 to 904	EJ-354235	DIN J TCS0815-0101 5P
14-SW901A	ES-354236	△ SW SEESAW SDDJA1153A 01-1 (J, U, E, B, S)
14-SW901B	ES-355573	△ SW SEESAW SDDAB1097A T=8.5 [C, A]
14-SW902x	ES-349070	△ SW SELECTOR YKS11-0002 02-4 (U, E, B, S)

REF. NO.	PARTS NO.	DESCRIPTION
14-SW903	ES-357045	SW SLIDE SSSB02685A 2-02-02N
14-F1A	EF-326639	△ FUSE TSC A 250V 3.15A [J]
14-F1B	EF-306956	△ FUSE TSC 125V 2.50A [C, A]
14-F1C, F2	EF-602550	△ FUSE SEMKO T 1.25A 250V [U, E, B, S]
14-F3A	EF-326639	△ FUSE TSC A 250V 3.15A [J]
14-F3B	EF-323080	△ FUSE TSC 125V 3.15A [C, A]
14-F3C	EF-691007	△ FUSE SEMKO T 3.15A 250V [U, E, B, S]
14-F4A	EF-311839	△ FUSE TSC A 250V 1.60A [J]
14-F4B	EF-308847	△ FUSE TSC 125V 1.60A [C, A]
14-F4C	EF-258344	△ FUSE SEMKO T 800MA 250V [U, E, B, S]
14-F5A	EF-311839	△ FUSE TSC A 250V 1.60A [J]
14-F5B	EF-308847	△ FUSE TSC 125V 1.60A [C, A]
14-F5C	EF-258344	△ FUSE SEMKO T 800MA 250V [U, E, B, S]
14-F6A	EF-306949	△ FUSE TSC A 250V 1.25A [J]
14-F6B	EF-309392	△ FUSE TSC 125V 1.25A [C, A]
14-F6C	EF-602550	△ FUSE SEMKO T 1.25A [U, E, B, S]

15. FINAL ASSEMBLY BLOCK

REF. NO.	PART NO.	DESCRIPTION
15-1A	BD-B354537A	PANEL FRONT AX80[J] PART [J]
15-1B	BD-B354537B	PANEL FRONT AX80 [A, C] PART [C, A]
15-1C	BD-B354537C	PANEL FRONT AX80 [E, V, B, S, U] PART [U, E, B, S]
15-2	SP-354538	SHEET MEMBRANE
15-3	SZ-354533	PANEL KEYBOARD
15-4	ZS-447761	T2BR30×06STL BNI (PANEL KEYBOARD FIX)
15-5	SP-354535B	SIDE PLATE (L) PAINT
15-6	ZS-342736	ST BID40×20STL BNI
15-7	ZW-535768	PW42×090×050STL BNI
15-8	SE-354539	WINDOW FRONT FLD
15-9	SK-B352952X5	KNOB MONITOR BLUE PART
15-10	SK-B352952X4	KNOB MONITOR WHITE PART
15-11	SK-354540	KNOB DATA
15-12	SP-354549B	SIDE PLATE (R) PAINT

INDEX

AX80

PART NO.	REF. NO.	PART NO.	REF. NO.	PART NO.	REF. NO.	PART NO.	REF. NO.
BA-L1003A030A	1-2	ED-301911	2-D502	EH-355561	3-1B2	EI-354099	5-IC3
BA-L1003A040A	1-1	ED-301911	2-D603	EH-355561	3-1B1	EI-354099	5-IC2
BA-L1003A050A	1-5A	ED-301911	2-D104	EH-355579	3-1B7	EI-354099	5-IC6
BA-L1003A050B	1-5B	ED-301911	2-D706	EH-355579	3-1B8	EI-354099	5-IC5
BA-L1003A050C	1-5C	ED-301911	2-D805	EH-355580	3-1B5	EI-357060	3-IC2
BA-L1003A120A	1-3A	ED-301911	2-D101	EH-355580	3-1B6	EI-354123	3-X1
BA-L1003A120B	1-3B	ED-301911	2-D404	EH-355580	3-1B4	EI-354145	3-IC4A
BA-L1003A130A	1-4	ED-301911	2-D701	EH-355580	3-1B3	EI-354146	3-IC25
BA-L1003A140A	1-7	ED-301911	2-D601	EI-213390	2-IC707	EI-354146	3-IC22
BA-L3001A050A	1-6A	ED-301911	2-D705	EI-213390	2-IC702	EI-354146	3-IC23
BA-L3001A050B	1-6B	ED-301911	2-D405	EI-213390	2-IC802	EI-354146	3-IC24
BA-L3001A050C	1-6C	ED-301911	2-D202	EI-213390	2-IC7	EI-354146	3-IC20
BD-B354537A	15-1A	ED-301911	2-D203	EI-213390	2-IC101	EI-354146	3-IC21
BD-B354537B	15-1B	ED-301911	2-D703	EI-213390	2-IC102	EI-354147	3-IC6
BD-B354537C	15-1C	ED-301911	2-D105	EI-213390	2-IC507	EI-354147	3-IC5
BD-L1003A020A	13-1	ED-301911	2-D107	EI-213390	2-IC701	EI-354149	3-IC10
BK-B354243	14-9	ED-301911	2-D2	EI-213390	2-IC401	EI-354149	3-IC9
BT-354245	14-T901C	ED-301911	2-D106	EI-213390	2-IC307	EI-354152	2-IC1
BT-354246	14-T901B	ED-301911	2-D201	EI-213390	2-IC402	EI-354152	3-IC8
BT-354247	14-T901A	ED-301911	3-D5	EI-213390	2-IC801	EI-354153	3-IC3
EC-323847	10-C4	ED-301911	3-D9	EI-213390	2-IC601	EI-354153	3-IC12
EC-323847	10-C11	ED-301911	3-D6	EI-213390	2-IC502	EI-354158	3-IC17
EC-328563	2-C822	ED-301911	3-D3	EI-213390	2-IC501	EI-354158	3-IC29
EC-328563	2-C622	ED-301911	3-D4	EI-213390	2-IC201	EI-354159	3-IC31
EC-328563	2-C122	ED-301911	3-D2	EI-213390	2-IC302	EI-354162	3-IC26
EC-328563	2-C522	ED-301911	3-D1	EI-213390	2-IC602	EI-354168	3-X2
EC-328563	2-C322	ED-301911	10-D4	EI-213390	2-IC107	EI-354175	10-IC5
EC-328563	2-C422	ED-301911	12-D2	EI-213390	2-IC202	EI-354184	2-IC806A
EC-328563	2-C222	ED-301911	12-D1	EI-213390	2-IC301	EI-354184	2-IC706A
EC-328563	2-C722	ED-306010	4-D1	EI-302233	2-IC2	EI-354184	2-IC306A
EC-338411	11-C1	ED-310387	12-D3	EI-302233	2-IC6	EI-354184	2-IC406A
EC-347967	10-C18	ED-315614	10-D5	EI-302233	2-IC3	EI-354184	2-IC506A
EC-357035	2-C605	ED-329058	2-D1	EI-302233	2-IC4	EI-354184	2-IC106A
EC-357035	2-C505	ED-337265	10-D3	EI-302233	2-IC3	EI-354184	2-IC606A
EC-357035	2-C405	ED-344280	2-D409	EI-304657	2-IC703	EI-354184	2-IC206A
EC-357035	2-C305	ED-344280	2-D408	EI-304657	2-IC103	EI-354197	3-IC27
EC-357035	2-C705	ED-344280	2-D509	EI-304657	2-IC704	EI-354232	3-IC11
EC-357035	2-C105	ED-344280	2-D708	EI-304657	2-IC304	EI-354283	2-IC28
EC-357035	2-C205	ED-344280	2-D208	EI-304657	2-IC504	EI-355560	3-IC30
EC-357035	2-C805	ED-344280	2-D209	EI-304657	2-IC303	EI-355575	3-IC16
EC-358450	14-C3	ED-344280	2-D608	EI-304657	2-IC104	EI-355578	3-IC7
EC-358450	14-C2	ED-344280	2-D809	EI-304657	2-IC503	EI-355665	10-IC1
ED-301911	2-D301	ED-344280	2-D808	EI-306727	2-IC305	EI-355666	10-IC3
ED-301911	2-D605	ED-344280	2-D508	EI-306727	2-IC705	EI-355771	6-IC3
ED-301911	2-D801	ED-344280	2-D309	EI-306727	2-IC505	EI-355771	6-IC2
ED-301911	2-D403	ED-344280	2-D308	EI-306727	2-IC105	EI-356299	10-IC4
ED-301911	2-D406	ED-344280	2-D609	EI-307644	9-IC1	EI-357060	3-IC1
ED-301911	2-D407	ED-344280	2-D109	EI-310043	3-IC18	EI-359630	2-IC806B
ED-301911	2-D804	ED-344280	2-D709	EI-310043	3-IC19	EI-359630	2-IC506B
ED-301911	2-D807	ED-344280	2-D108	EI-310045	3-IC32	EI-359630	2-IC706B
ED-301911	2-D802	ED-354114	6-D13	EI-324255	2-IC9	EI-359630	2-IC306B
ED-301911	2-D803	ED-354114	6-D8	EI-324255	2-IC20	EI-359630	2-IC406B
ED-301911	2-D604	ED-354114	6-D6	EI-324255	2-IC11	EI-359630	2-IC606B
ED-301911	2-D507	ED-354114	6-D7	EI-324255	2-IC8	EI-359630	2-IC106B
ED-301911	2-D602	ED-354114	6-D4	EI-324255	2-IC10	EI-359630	2-IC206B
ED-301911	2-D704	ED-354114	6-D12	EI-324255	2-IC19	EI-359631	3-IC4B
ED-301911	2-D702	ED-354114	6-D11	EI-324255	2-IC14	EJ-301513	14-J901x
ED-301911	2-D606	ED-354114	6-D10	EI-324255	2-IC13	EJ-349202	3-1
ED-301911	2-D204	ED-354114	6-D5	EI-324255	2-IC12	EJ-353031	9-J2
ED-301911	2-D103	ED-354114	6-D14	EI-324255	2-IC18	EJ-354235	14-J903
ED-301911	2-D102	ED-354114	6-D9	EI-324255	2-IC15	EJ-354235	14-J904
ED-301911	2-D207	ED-357036	10-D1	EI-324255	2-IC17	EJ-354235	14-J902
ED-301911	2-D506	ED-357037	10-D2	EI-324255	2-IC16	EJ-357148	14-16
ED-301911	2-D205	ED-357038	10-D6	EI-324255	2-IC23	EJ-357159	9-J4
ED-301911	2-D206	EF-258344	14-F4C	EI-324255	2-IC22	EJ-357159	9-J3
ED-301911	2-D806	EF-258344	14-F5C	EI-324255	2-IC21	EJ-357159	9-J1
ED-301911	2-D501	EF-306949	14-F6A	EI-324255	2-IC27	EJ-357159	9-J6
ED-301911	2-D302	EF-306956	14-F1B	EI-324255	2-IC26	EJ-357159	9-J5
ED-301911	2-D607	EF-308847	14-F5B	EI-324255	2-IC25	EJ-358467	2-S2
ED-301911	2-D306	EF-308847	14-F4B	EI-324255	2-IC24	EJ-358467	2-S3
ED-301911	2-D305	EF-309392	14-F6B	EI-330391	3-IC14	EJ-358467	2-S4
ED-301911	2-D707	EF-311839	14-F4A	EI-330391	3-IC15	EJ-358467	2-S1
ED-301911	2-D303	EF-311839	14-F5A	EI-330391	3-IC13	EM-354097	4-IN1
ED-301911	2-D304	EF-323080	14-F3B	EI-336995	10-IC2	EM-354097	4-IN2
ED-301911	2-D504	EF-326639	14-F1A	EI-353315	6-IC1	EM-354097	5-IN3
ED-301911	2-D307	EF-326639	14-F3A	EI-354098	4-IC1	EM-354097	5-IN2
ED-301911	2-D503	EF-602550	14-F6C	EI-354098	5-IC1	EM-354097	5-IN1
ED-301911	2-D505	EF-602550	14-F1C	EI-354099	4-IC3	EM-354112	6-D1
ED-301911	2-D401	EF-602550	14-F2	EI-354099	4-IC2	EM-354113	6-D2
ED-301911	2-D402	EF-691007	14-F3C	EI-354099	5-IC4	EM-354113	6-D3

INDEX

PART NO.	REF. NO.	PART NO.	REF. NO.	PART NO.	REF. NO.	PART NO.	REF. NO.
EO-318635	9-L1	ES-354115	8-SW8	EV-358043	14-VR902		
EO-318635	9-L2	ES-354115	8-SW1	EW-306427	14-1A		
EO-354224	11-FL1	ES-354115	8-SW9	EW-315767	14-1C		
EQ-348929	12-L1	ES-354115	8-SW13	EW-322400	14-1D		
ER-302241	10-R3	ES-354115	8-SW6	EW-322401	14-1E		
ER-306805	9-R7	ES-354115	8-SW10	EW-358858	14-1B		
ER-306805	9-R8	ES-354115	8-SW7	EZ-200473	10-1		
ER-320528	2-FR1	ES-354115	8-SW3	EZ-302906	14-2B		
ER-337338	2-R606	ES-354115	8-SW2	EZ-354169	3-BT1		
ER-337338	2-R106	ES-354236	14-SW901A	EZ-631945	14-2A		
ER-337338	2-R306	ES-355573	14-SW901B	MH-314988	14-15		
ER-337338	2-R506	ES-357045	14-SW903	MH-358770	14-18		
ER-337338	2-R706	ET-308141	12-TR1	MI-354552	13-3		
ER-337338	2-R406	ET-332778	2-TR601	MZ-358512	14-17		
ER-337338	2-R806	ET-332778	2-TR702	SA-311742	14-3		
ER-337338	2-R206	ET-332778	2-TR501	SE-354539	15-8		
ER-338000	10-R1	ET-332778	2-TR102	SE-357978	14-13		
ER-343989	2-R841	ET-332778	2-TR602	SK-B352952X4	13-6		
ER-343989	2-R541	ET-332778	2-TR1	SK-B352952X4	15-10		
ER-343989	2-R441	ET-332778	2-TR401	SK-B352952X5	15-9		
ER-343989	2-R341	ET-332778	2-TR201	SK-354540	15-11		
ER-343989	2-R741	ET-332778	2-TR701	SK-354544	14-14		
ER-343989	2-R141	ET-332778	2-TR801	SP-354533	15-3		
ER-343989	2-R241	ET-332778	2-TR402	SP-354533B	15-5		
ER-343989	2-R641	ET-332778	2-TR101	SP-354549B	15-12		
ER-353064	2-R328	ET-332778	2-TR301	SP-354550	13-2		
ER-353064	2-R828	ET-332778	2-TR202	SZ-354538	15-2		
ER-353064	2-R428	ET-332778	2-TR802	TC-690851	14-6		
ER-353064	2-R728	ET-332778	2-TR302	ZG-354553	13-4		
ER-353064	2-R128	ET-332778	2-TR502	ZS-310984	13-5		
ER-353064	2-R628	ET-332778	6-TR7	ZS-341960	14-5		
ER-353064	2-R528	ET-332778	6-TR4	ZS-342736	15-6		
ER-353064	2-R228	ET-332778	6-TR5	ZS-353260	14-4		
ER-353582	2-R527	ET-332778	6-TR6	ZS-354230	14-10		
ER-353582	2-R327	ET-332778	6-TR3	ZS-355569	14-7		
ER-353582	2-R227	ET-332778	6-TR1	ZS-411232	14-11		
ER-353582	2-R727	ET-332778	6-TR2	ZS-447761	15-4		
ER-353582	2-R827	ET-347026	10-TR1	ZW-357644	14-8		
ER-353582	2-R127	ET-354167	3-PH1	ZW-413267	14-12		
ER-353582	2-R627	ET-357061	3-PH2	ZW-535768	15-7		
ER-353582	2-R427	ET-403413	3-TR1	ZW-632226	10-2		
ER-355564	3-R25	ET-491051	2-TR704				
ES-349070	14-SX902x	ET-491051	2-TR403				
ES-354115	6-SW10	ET-491051	2-TR703				
ES-354115	6-SW3	ET-491051	2-TR304				
ES-354115	6-SW2	ET-491051	2-TR504				
ES-354115	6-SW5	ET-491051	2-TR603				
ES-354115	6-SW7	ET-491051	2-TR303				
ES-354115	6-SW6	ET-491051	2-TR103				
ES-354115	6-SW12	ET-491051	2-TR203				
ES-354115	6-SW11	ET-491051	2-TR204				
ES-354115	6-SW4	ET-491051	2-TR604				
ES-354115	6-SW1	ET-491051	2-TR104				
ES-354115	6-SW9	ET-491051	2-TR404				
ES-354115	6-SW8	ET-491051	2-TR503				
ES-354115	6-SW14	ET-491051	2-TR803				
ES-354115	6-SW13	ET-491051	2-TR804				
ES-354115	7-SW18	EV-307695	2-VR201				
ES-354115	7-SW4	EV-307695	2-VR401				
ES-354115	7-SW19	EV-307695	2-VR501				
ES-354115	7-SW17	EV-307695	2-VR601				
ES-354115	7-SW15	EV-307695	2-VR801				
ES-354115	7-SW12	EV-307695	2-VR301				
ES-354115	7-SW16	EV-307695	2-VR101				
ES-354115	7-SW3	EV-307695	2-VR701				
ES-354115	7-SW2	EV-336770	2-VR202				
ES-354115	7-SW13	EV-336770	2-VR102				
ES-354115	7-SW1	EV-336770	2-VR302				
ES-354115	7-SW6	EV-336770	2-VR502				
ES-354115	7-SW5	EV-336770	2-VR1				
ES-354115	7-SW11	EV-336770	2-VR402				
ES-354115	7-SW10	EV-336770	2-VR802				
ES-354115	7-SW9	EV-336770	2-VR702				
ES-354115	7-SW8	EV-336770	2-VR602				
ES-354115	7-SW7	EV-354253	13-VR904				
ES-354115	7-SW14	EV-354254	13-VR907				
ES-354115	8-SW4	EV-354255	13-VR906				
ES-354115	8-SW5	EV-354255	13-VR905				
ES-354115	8-SW12	EV-354256	14-VR903				
ES-354115	8-SW11	EV-358043	14-VR901				

AKAI ELECTRIC CO., LTD.

12-14, 2-Chome, Higashi-Kojiya, Ohta-Ku, Tokyo, Japan

TEL: Tokyo (742) 5111 CABLE: HIFIAKAI TOKYO TELEX: J26261

Printed No. 850422-G1-1000

Printed Date: JUNE 18, 1985

Printed in Japan